




THE COAT OF ARMS OF KING EDWARD VI

THE KING EDWARD'S SCHOOL  
BIRMINGHAM TRUST

**2013-14 DONOR REPORT**



A close-up, profile view of a young man with light brown, wavy hair and round glasses. He is wearing a white shirt and a dark bow tie. He is holding a violin and appears to be playing it. The background is a warm, out-of-focus orange-brown color.

“It is through the Assisted  
Places Scheme that I have  
been able to achieve things  
that I didn’t believe possible  
in any school career, let  
alone my own.”

Roberto Ruisi (Sixths)

## Contents

News in brief	04
Assisted Places 100 Campaign	07
John Osborn	
My gift to Assisted Places	08
Leaving a legacy	10
Making a difference	11
2013 in numbers	12
Donor list 2013-14	13

# A thank you from..



## ..The Chairman

The last 12 months have been an exciting time for the Trust. Last summer we received an extraordinarily generous donation from John Osborn (1962). The donation of £1.4 million had previously been looked after by the Foundation but has now been transferred into the Trust. John is funding 10 Assisted Places in the school including that of Roberto Ruisi (opposite) and we are hugely indebted to him. You can read more about John Osborn's kind gift in this Report.

In October the Andrew Brode Wing was officially opened. The building houses modern languages and science classrooms as well as a new Sixth Form Centre. It is a really wonderful facility and again we are indebted to Andrew for his generosity.

Finally, in December we received a gift from our 1,000<sup>th</sup> donor, John Mountford (1949). I would like to thank John and all the other donors for their support. We have now raised over £6 million for Assisted Places which will be funding 60 boys through the school from September 2014.

We expect the next 12 months to be an equally exciting time for the Trust as we launch our AP100 Campaign. You can read more about this on page seven and further details, including a brochure, will be sent out to everyone soon.

■ Stephen Campbell (1978)  
Chairman of the Trustees



## ..The Chief Master

Last week I received a letter and an early donation towards the AP100 Campaign from a former pupil who first walked into the "smoke-encrusted precincts" of New Street in 1930. He wrote, in a handwriting of rare quality and clarity, "I read [of the initiative for Assisted Places] with full approval and much admiration, especially since I had been a beneficiary of a similar policy in the 1930's, being enabled to enter the school with a King Edward Scholarship and Joseph Scott Scholarship. My debt to the school was career-enhancing: it was followed by a scholarship to New College, Oxford and then to a Readership in Classics at King's College, London."

This man's tale is the tale of so many of us and we will continue to pursue the goal of which he speaks. There is a simple truth about the most significant events of recent times in this school, from the life-enhancing Ruddock Performing Arts Centre, to the teaching-enhancing Andrew Brode Wing, to the sport-enhancing hockey astro pitch, to the 60 additional boys here on Assisted Places, all enhancing the school's quality and diversity.

None of this could have happened without the support of all of you. The truth is that simple and we are all grateful beyond words, and certainly 200 words.

■ John Claughton (1975)  
Chief Master and Trustee



# News in brief



Faisal Saigol

## Old Edwardians fund new scholarships

This year the school was able to offer additional scholarships to the top performing boys in the entrance exam thanks to two Old Edwardians.

Faisal Saigol (1990) and Stuart Southall (1976) suggested funding new scholarships to encourage more boys finishing in the top 25 of the entrance exam to accept a place at the school. Making King Edward's School available to the most able boys is one of the key aims of the school, and the donations from Faisal and Stuart, topped up by the Trust, has enabled the school to offer an additional £5,000 per year in scholarships. And so, in September 2014, 20 out of the top 25 boys accepted, the highest number for a decade.

Faisal, who first suggested donating to scholarships, said: "On the one hand, the national stage is now more open to talent irrespective of gender, sexuality, religion, race or age than it ever has been. On the other, the UK risks shutting out the less privileged from high-quality education. I am delighted to help KES ensure that over a number of years those talented students who are not in a position to accept a place without a scholarship are given the financial support they need."

Stuart, who matched Faisal's donation, said: "Whilst it is essential to strike a balance between access irrespective of means and access based on academic merit, in a highly competitive secondary school environment the school must strive to attract a good share of high achievers. There is a correlation between performance



Stuart Southall

at entry and a candidate's later success and I am delighted that this initiative seems to have borne fruit in its first year."

Following the impact on boys accepting places, the school is hoping to be able to continue this funding in future years.



### Why I give to Assisted Places...

"My whole life has been shaped and strengthened by my time at KES. I received an education I believe to be unmatched elsewhere for depth and breadth, thanks to first-rate teaching and an ethos predicated on nothing but the best being good enough. However, but for the then Government's direct grant scheme, it would not have been possible: my parents would have found such schooling unaffordable. So, if I can now help, even to a small extent, to make KES accessible to others similarly placed, I consider it an obligation."

**Michael Stuart Green**  
(1959)



Andrew Brode and Professor Martin Swales

## Opening of the Andrew Brode Wing

The £5m modern languages and science centre was officially opened on Wednesday, 16 October 2013 by Professor Martin Swales (1958), Emeritus Professor of German at University College London.

The new development, which also incorporates a new sixth form centre, has been substantially funded by a donation from former pupil Andrew Brode who is the Executive Chairman of RWS Holdings and a keen linguist.

John Claughton, Chief Master, said: "The gift given by Andrew Brode is of great scale and significance and has enabled us to create outstanding new facilities for science and modern languages. And there is a wonderful new space for Sixth Form pupils, too. Languages are more important at King Edward's now than ever. Every boy takes at least one modern language to IGCSE and, since the introduction of the International Baccalaureate, every boy continues to study a language for two years in the Sixth Form."

The development is part of a £25 million building programme that the school is undertaking. The first phase, the Ruddock Performing Arts Centre, was opened in 2012 and the final phase will be a major development of the school's indoor sports facilities.



The Chamber Orchestra performing in Chuiis

## Helping boys make the most of the school

The Assisted Places Fund has made an overwhelming difference in enabling able boys to attend King Edward's, regardless of financial circumstances. So that these boys can then enjoy the opportunities available to them when at the school, the Assisted Places Support Fund was created.

The Support Fund provides financial support to boys on Assisted Places so that they can participate in activities, trips and expeditions. In the last year alone, the donations received from alumni, parents and former parents to this Fund, has provided over 80 music lessons, and enabled several boys to tour Italy as part of the Chamber Orchestra or go on a foreign exchange.



## Why I give to Assisted Places...

"I was lucky enough to win a free place at KES soon after the end of World War II, and I welcome this chance to assist some other boy towards a similar opportunity almost 70 years later." **Paul Moorhouse (1951)**





Members of the 2014 telephone campaign team

## Telephone Campaign 2014

Since 2010, our annual telephone campaigns have raised in excess of £800,000 – a fantastic result in such a short time – and we are extremely grateful to the 870 donors who have supported the four campaigns, which are now funding Assisted Places for 20 boys.

In 2013 we were particularly thankful to an anonymous donor, who kindly agreed to gift £50 for each donor who increased their gift from the previous year. Over 70% of our regular donors increased their donation, providing an additional £15,000 per year and more than enough to fund an Assisted Place.

In July we will run our fifth campaign with another group of Divisions, Sixths and recent leavers. They will be calling Old Edwardians, together with some former and current parents, to update them on school news and seek support for the Assisted Places 100 Campaign.

### Why I give to Assisted Places...

"I support Assisted Places because I believe that a KES education should be made available to all boys with ability regardless of means, giving them potentially life changing opportunities that some would not otherwise have. I was one of those in the past who benefited from the historic direct grant scheme and am forever grateful for my education at KES." **Nigel Speak (1977)**



## Parents fund a parting gift

The parents of boys who left the Sixths in 2013 have raised enough to fund an Assisted Place for seven years, around £80,000.

It was the first time that parents of boys leaving the school had been asked to support the Assisted Places Scheme and the response was overwhelming. Parents of one-third of the year group made donations and by the end of the year the target amount for the '2013 Leavers' Assisted Place' had been reached.

We are incredibly grateful to all parents who supported the campaign, in particular one anonymous parent who made a gift of £21,000 (£3,000 per year) because they wanted to recognise that the school had brought out the very best in their son both academically and as a person. It is hoped that we will be able to repeat this success with parents of this year's Sixths and fund a '2014 Leavers' Assisted Place'.



## Thank you one thousand times

In December 2013, we were pleased to announce our 1,000<sup>th</sup> donor, John Mountford (1949). On hearing the news, John said: "I am very happy to learn that I am the 1,000<sup>th</sup> donor, especially as I donated £1,000 to the Assisted Places Fund – what a happy coincidence. Roll on the next 1,000 donors!"

Both the Trust and the school are indebted to John and all of the donors who have supported so far. Their donations have raised over £9 million including over £6 million for Assisted Places and as a result there will soon be 60 boys in the school receiving financial support who would otherwise not be here. These gifts have made an enormous difference, not just to the boys who benefit, but also to the school as a whole.

# Assisted Places 100 Campaign

## AP100 – more than just a number

The ambition of the AP100 Campaign is to raise £10 million from 1,500 donors to fund 100 Assisted Places by 2017. We have currently raised over £6m for 60 Assisted Places from 1,000 donors, so we are already on the way.

However, the AP100 Campaign is not just about numbers. It is about boys and their lives. It is about the school helping boys from ordinary backgrounds achieve extraordinary things, something King Edward's has done for centuries. If we achieve our goal, 100 boys from a wide range of backgrounds and communities in Birmingham and beyond will get the education that so many Old Edwardians have enjoyed, an education that could change their lives.

For more information about the AP100 Campaign, its Ambassadors, and boys who are already feeling the benefit of an Assisted Place visit: [www.trust.kes.org.uk/ap100](http://www.trust.kes.org.uk/ap100).

## AP100 Ambassador: Sir Paul Ruddock

Sir Paul Ruddock gained a Foundation Scholarship to King Edward's School. He became House Captain of Gifford and swam, competed in athletics and played rugby for the school. In 1998 he founded Lansdowne Partners, now one of the largest alternative asset managers in Europe, and has been Chairman of the Victoria and Albert Museum since 2007.



"I came from a professional middle class background but my parents had come from very poor backgrounds. I went to the local junior school, and King Edward's School, for me, was an amazing springboard. Not only did it provide a fantastic academic education that led on to Oxford, it also provided wonderful opportunities in drama, music and sport and without a doubt stimulated my passions for history and art which have been a core part of my life ever since.

"I could not have become the person I am without King Edward's and the inspirational teaching it gave me. If I were applying today, unless a bursary was available, my parents would not be able to afford to send me to King Edward's and my life might have been very different."



**AP100**  
Assisted Places Campaign



John Osborn (1962), the former Chief Executive of Alexon Fashion Group, talks about his decision to give £1.4 million to fund several Assisted Places for musicians.

When I was at King Edward's there was just one room for music making in the school – one room, where we trouped in once a week to listen to Holst's *Planet Suite* played on an old gramophone. Today there are more than 20 in the Ruddock Performing Arts Centre, and there's a 450-seat concert hall to boot. I like to think the lack of musical space during my time at the school directly correlates with my subsequent lack of musical ability, something I very much regret. However what I do have now is a great love of music, particularly Baroque and Early Music.

Back then my father was ill and so my parents could never have afforded to send me to a school like King Edward's. However I was lucky enough to benefit from a Foundation Scholarship, the equivalent of today's Assisted Place, and so was educated there and later, through a State Scholarship, at Sidney Sussex, Cambridge, entirely free. Sadly such opportunities do not exist for pupils today and so, at risk of sounding pompous, it seemed fairly logical for me to give something back.

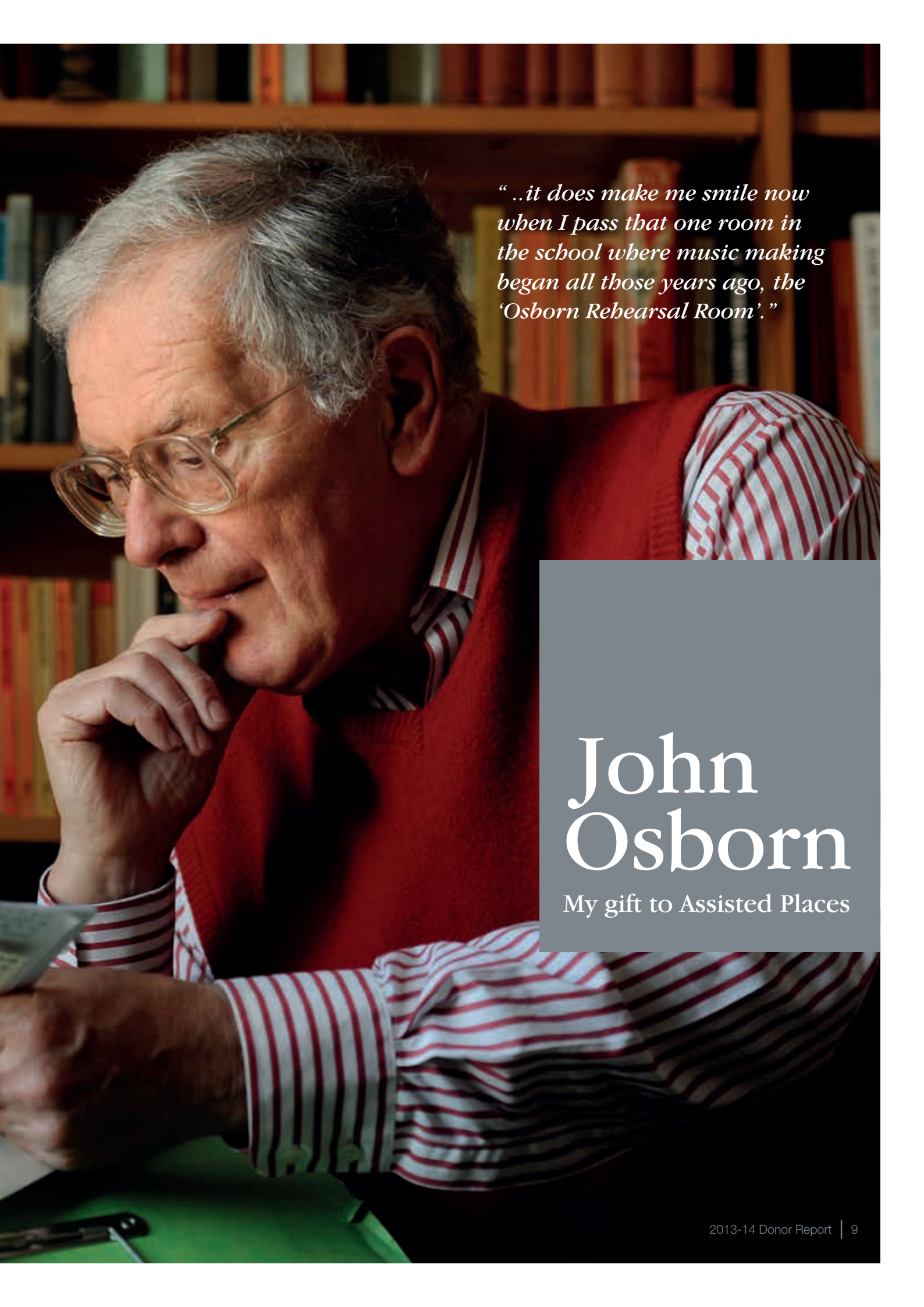
I was also fortunate to be in the financial position where I could make a difference. My career was a series of happy accidents but it eventually turned out that I was quite good at running businesses that were in a mess and making some money at the same time. At the time of my divorce some years ago my ex-wife was extremely undemanding in terms of a financial settlement and I did not want to leave my three children with the sort of money that might ruin their lives, so giving money to charity seemed a sensible alternative.

In 2002 these three things – my love of music, my debt to King Edward's and my ability to do something about it – came together when I started funding musicians on Assisted Places at the school. I am currently supporting 10 boys in total or, as John Cloughton would put it, I am funding most of the string section of the school orchestra.

I always tell the school not to make a fuss because, it is all a bit embarrassing and, despite what people might think, giving your money away as a benefactor is in fact very rewarding. I enjoy attending the concerts the boys take part in and I enjoy reading the letters they send me each year. I have taken great pride in their achievements, particularly Roberto Ruisi who became the youngest ever leader of the National Youth Orchestra in 2011 and reached the strings final of the Young Musician of the Year this year. I am told he is the best violinist the school has had in a generation.

So there is no need to make a fuss – this is all reward enough. But donor recognition never hurts and it does make me smile now when I pass that one room in the school where music making began all those years ago, the 'Osborn Rehearsal Room'.





*“..it does make me smile now  
when I pass that one room in  
the school where music making  
began all those years ago, the  
‘Osborn Rehearsal Room’.”*

# John Osborn

My gift to Assisted Places

# Leaving a legacy



## Why I've chosen to leave a legacy

"I have decided to gift a legacy to King Edward's because of the huge contribution the school has made to my life. My father went to the school, so it was very fortunate that my brother and I were able to follow him. The broad education and opportunities on offer are second to none and have been incredibly important to me, particularly the sense of giving one high standards and aiming for excellence - which has stayed with me throughout my life."

Ian Plenderleith  
(1961)

## Our father's legacy

Last summer, we remember reading the article by the author Lee Child in the Donor Report and being moved by his decision to fund an Assisted Place in memory of his parents, who were very proud that their sons had attended King Edward's.

A few months later our own father died suddenly, just a few months after our mother. It was obviously a difficult time but soon after, as we found ourselves reflecting on their lives, Lee's gift came to mind.

Wesley Cummings was brought up in Cullercoats, on the coast near Newcastle, and went to Tynemouth High School, not RGS Newcastle which was fee-paying. Most of his ancestors came from Durham mining stock and he was the first from his family to attend university.

At school he met our mother, Sheila Scott, and they went to university together, one to read Chemistry and the other to read Maths. Dad and Mum were passionate about education and especially schools, the places that give people the chance to make something of their abilities and to change their lives.

They chose to move to Birmingham partly because of the reputation of King Edward's. It was a source of great pride to both our parents that we gained places there when it was still maintained by the direct grant.

Dad worked all his life in research chemistry in three of the most innovative industries of the late 20th century: prescription drugs, polymers, and nutrition. Mum was a Maths teacher in girls' schools in Nottingham and Birmingham.



Sheila Cummings



Wesley Cummings

Inspired by Lee Child, we decided to make a donation from our father's estate to endow an Assisted Place in the name of our parents, Wesley and Sheila Cummings. We can't think of a better way to remember their spirit, and their values, than to give other boys a similar chance at the start of their lives.

**David Cummings (1975) and Brian Cummings (1978)**

## Legacy gifts

A legacy is an incredibly personal gift to make and we are extremely grateful to those who have chosen to remember King Edward's in their will. They make a lasting difference to both the lives of future generations of King Edward's pupils and the school itself.

Additional benefits in leaving a legacy are:

- As the Trust is a charity, your legacy will be exempt from inheritance tax.

- Leaving 10% of your taxable estate to charity qualifies for a reduced rate of inheritance tax across your whole estate.

To leave your legacy or find out more contact Helen Hotchkiss, Development Manager, on tel: **0121 415 6095**, email: [development@kes.org.uk](mailto:development@kes.org.uk) or visit: [www.trust.kes.org.uk/legacy](http://www.trust.kes.org.uk/legacy)



# Making a difference

Three boys on Assisted Places talk about the impact King Edward's has made on them.



"I came to an open day at the school and I really liked it. Everyone seemed really friendly and it just seemed like somewhere I'd like to spend seven years of my life. The thing I most enjoy about King Edward's is the people, both the students and the teachers, and you have lots of opportunities to do things that I never would have done had I not come here."

**Yanbo Yin (Divs)**



"Having a place at King Edward's means that I can go to one of the best schools in the world! My biggest achievement so far is getting the highest mark in Physics, which means a lot to me as I like Physics and I'm planning to take it at university."

**Osama Abdelkader (Rems)**



"Being on an Assisted Place probably gives me a stronger motivation to do well. I love the music department and the opportunities it provides and I like the challenge and demands of achieving high academic standards. I was very proud to perform at a lunchtime recital. It was brilliant!"

**Philip Edwards (UMs)**

# 2013 in numbers

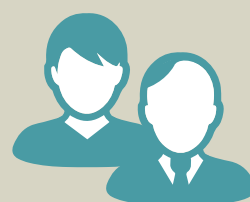
Over **£3 million**  
raised including...



..**£120,000**  
from Gift Aid

..by **743** donors

..aged between **18** and **94**



and funding **13** new  
Assisted Places and  
capital projects

..supporting  
music lessons

**80**



..**1 big thank you.**

All figures are taken from donations received between 1 January and 31 December 2013.  
For a copy of the financial statement, visit: [www.trust.kes.org.uk/accounts2013](http://www.trust.kes.org.uk/accounts2013)



# Donor list

Thank you to all those who have supported  
The King Edward's School Birmingham Trust.

The following donors made a gift to the Trust  
between 1 June 2013 and 31 May 2014, 22 donors  
have asked to remain anonymous. Whilst all care  
and attention has been taken in drawing up this list,  
we apologise for any errors or omissions. For a full  
list of donors who have given to date, visit:

[www.trust.kes.org.uk/list](http://www.trust.kes.org.uk/list)

## Sponsors

The following donors are funding one or more Assisted Places:

Graham Kinsman	1959
John Osborn	1962
Martin Leadbetter	1969
Jim Grant	1973
Kenneth McKelvey	1974
Ian Metcalfe	1976
Duncan Shuttleworth	1976
Stuart Southall	1976
Simon Vickers	1976
Trevor Bayley	1979
Waj Hashmi	1990
Lee Bushell	2000
Tim Clarke	
Chris Gill	
Janet White	
Old Edwardians Association	
The Grimmitt Trust	
The Tolkien Trust	

The Trustees would particularly like to thank John Osborn (1962)  
who is funding 10 Assisted Places and The Tolkien Trust who are  
partly funding three Assisted Places.

## 1552 Society

The recognition group for all legacy donors.

Russell Evans	1939
Michael Banton	1944
Ivan Roitt	1945
Bill Stone	1948
Dennis Hadley	1951
Malcolm Stirling	1951
David Wright	1952
Peter Trevis	1953
Peter Stoward	1954
Mike Brookes	1960
Peter Cairns	1960
Ian Plenderleith	1961
John Osborn	1962
Bob Baldwin	1965
Sir Paul Ruddock	1976
Stuart Southall	1976
Rosemary Berridge	
Graham Underhill	

## Donors

The following donors  
are collectively  
funding Assisted  
Places or supporting  
other areas:

### 1936

Norman Brown  
Ken Smith

### 1939

Michael Roper-Hall

### 1940

Edward Lloyd-  
Hughes

### 1941

A J Gossage

### 1942

John Collins

### 1943

Robert Anchor  
Douglas Hague

### 1944

Michael Banton  
Ken Morris  
Alan Parker  
Patrick Wells

### 1945

John Bakewell  
Gordon Britton  
Derek Davis  
Robert Morgan  
Peter Rawll  
Ivan Roitt  
Fred Wright

### 1946

John Botterill  
Bryan Higgs  
Alan Jacombs  
John Reeves  
Frank Thacker

### 1947

Peter Coates  
John Croydon  
Brian Davies  
Gerald Grant  
Ray Lambourn  
James Morgan  
Francis Tennant

### 1948

John Fleming  
John Gardner  
Trevor Gatty  
John Harrison  
Ronald Heath  
Peter Lewis  
Ray Reese  
John Skinner  
Bill Stone  
Stanley Tooke  
Bertie Tuckey

### 1949

John Jarrams  
John Ludlow  
John Mountford  
Gerald Richards  
Derek Ridout  
Michael Spittle

### 1950

Victor Blunt  
Alan Brewin  
Robert Chitham  
Peter Colley  
John Goode  
Chris Latham  
David Rattue  
David Sorrell  
Kevin Waldron  
Owen Wheatley

### 1951

Trevor Almond  
Hugh Brierley  
Kenneth Dore  
Tony Gough  
George Grundy  
David Hill  
Barrie James  
John Kaighin  
Robert King  
Paul Moorhouse  
John Pickworth  
Malcolm Stirling  
George Taplin  
Graham Tayar  
Ian Thompson  
Don Yetman

### 1952

David Bayliss  
Peter Cole  
Michael Evans  
William Hetherington  
Brian Tolley  
David Ward  
David Winter  
David Wright

### 1953

Chris Barnard  
Derek Benson  
John Buckler  
Gordon Campbell  
Brian Cleaver  
Neil Gardner  
Ronald Griffin  
Len Hoare  
Colin Jones  
John Maund  
Noel McCormack  
Alan Richards  
Colin Sanders  
Peter Trevis  
Oswald Wheatley  
Trevor Williots  
John Wright

### 1954

Bernard Adams  
Cedric Ashley  
John Fuery  
Alan Kirkby  
Alf Manders  
Rod Smethurst  
Arthur Stockwin  
Michael Sutton  
Brian Taylor  
David Young

### 1955

John Adams  
Derek Bennett  
Alan Birch  
Anthony Brierley  
David Edwards  
Roger Farmer  
Barrie Gane  
John Jennings  
Peter Martin  
Alan Parkin  
David Plews  
Peter Sibley  
John Slaney  
Richard Tipton  
David Witherow

### 1956

Martin Barnes  
Graham Caulton  
John Eastbury  
Don Huxley  
Keith Masters  
Peter Midgley  
Michael Platt

# Donor list continued...

## 1957

Garry Bean  
David Corney  
Raymond Dauncey  
David Harrison  
John Henly  
Michael Honeybone  
Andrew Hornig  
Gordon Kuphal  
Alan Pearson

## 1958

David Ashton  
Roger Bickerton  
Roger Bonehill  
Chris Carmell  
Anthony Clayton  
John Cowan  
Robert Darlaston  
John Edwards  
Rodney Frobisher  
Richard Green  
Paul Holland  
Paul Matthews  
Nicholas McCarty  
Philip Pardoe  
John Patrick  
Maxwell Payne  
Geoffrey Purkis  
Hedley Ramshaw  
David Robinson  
Richard Stagg  
Martin Swales  
Roger Taylor  
Stephen Watson

## 1959

Michael Beeson  
Richard Birch  
David Burgess  
David Chalmers  
Michael Green  
Roger Hughes  
Brinley Hughes  
John Humphries  
Graham Kinsman  
Ian Knowles  
Thomas Lee  
James Parke  
Peter Stanworth  
Peter Tyrer  
Ivan Webley  
Roger Wilkins

## 1960

Peter Cairns  
Iain Colquhoun  
Michael Findley  
Michael Jones  
Michael Reeve  
Anthony Sharp  
Brian Shaw  
Malcolm Sidwell  
John Smith  
Andrew Turner

## 1961

Tim Austin  
Richard Cross  
Jim Evans  
Alan Gracie  
Maurice Haseler  
Alan Loach  
Andrew Packham  
Ian Plenderleith  
Terry Plumb  
Roger Pritchett  
Terence Wall  
David Webb  
Keith Williams

## 1962

Peter Babb  
James Dawson  
Colin Goodman  
William Gulland  
Anthony Jackson  
Graham Knowles  
Fred Kornhauser  
Richard Ledger  
Graham Mackenzie  
Roger Mellor  
Alexander Moon  
Michael Phipps  
Philip Roe  
Michael Sevvit

## 1963

Matthew Bailey  
Peter Harborne  
John Rhodes  
Colin Rowland  
Andy Smith  
Anthony Watts  
John White  
Michael Windram  
Martin Woodward

## 1964

Antony Abbey  
Hugh Barlow  
Richard Batchelor  
Stephen Cockle  
Anthony Fawke  
Michael Hamar  
Peter Johnstone  
David Long  
David Prior  
Clive Smith

## 1965

Robert Baldwin  
John Binns  
Jon Bladon  
Frank Booth  
Raymond Charlton  
Owen Finnegan  
David Gilbert  
Graham Mason  
Martin Mordecai  
Ian Nuttall  
Peter Osborne  
Edward Picken  
Michael Randall  
Robert Whalley

## 1966

Alan Coustick  
Haydn Cullen-Jones  
Christopher Darrall  
Max Davis  
Roger Guck  
Christopher Noke  
Alistair Scott  
Malcolm Simpson  
Martin Smith  
Glyn Williams

## 1967

Richard Arculus  
Michael Blair  
Colin Bryan  
Hugh De Lacy  
Peter Kilvert  
Geoff Robinson  
Paul Rugg-Easey  
David Thompson  
Paul Thomson

## 1968

Paul Bennett  
Michael Biddle  
Colin Graham  
Paul Harrison  
Jon Homer  
David Jeffcoat  
Robert Jones  
Edward Lambourne  
George Marsh  
Andrew Morris  
Roger Overin  
Peter Topp  
Mike Withers

## 1969

John Davies  
Martin Leadbetter  
John Sheriff  
Peter Testar  
Martyn Thomas  
Ian Thomson  
John Wheatley

## 1970

Martin Bilson  
Julian Burling  
Richard Clarke  
Chris Eckersley  
Richard Gale  
Neil Gilmore  
Malcolm Hunt  
Christopher Kondic  
Martin Robinson  
Michael Seabrook  
Derek Walker

## 1971

Colin Bromage  
Andrew Coe  
Roderick Cooper  
David Cross  
Stephen Hammond  
Alan Homer  
Ewen Mackenzie-Bowie  
Munna Mitra  
Clive Norton  
Andrew Sadleir  
Malcolm Spencer

## 1972

Christopher Hodges  
Nigel Kay  
Christopher Lee  
Clive Owen  
Robert Wilkins

## 1973

Dave Edwards  
John Faulkner  
Kevin Grice  
Simon Inglis  
David Mudd  
Patrick Russell

## 1974

Stephen Badsey  
Barry Elkington  
Geraint Evans  
Rob Fisher  
Rod Hickman  
Scott Newton  
David Rothery  
Charles Wright

## 1975

Charlie Abrahams  
Paul Andrews  
William Blumenthal  
Nigel Brown  
John Cloughton  
Julian Cooper  
David Cummings  
Ian Galer  
Andrew Millinchip  
Mark Pearsall  
Gerard Roberts  
Bryce Somerville  
Adam Spector

## 1976

Stephen Cooper  
Andrew Halstead  
Jonathan Harris  
Andrew Hudson  
Martin Jesson  
David Johnson  
Malcolm McKenzie  
Ian Metcalfe  
William Powell  
Stuart Southall  
Mark Venus  
Simon Vickers

## 1977

Simon Coghlan  
Nicholas Keen  
Nigel Speak

## 1978

Stephen Campbell  
Nick Glass  
Ian Keeling  
Nicholas Kimberley  
Nick London  
David Owen-Smith  
Mick Ozimek  
Adam Shuttleworth  
Richard Young

## 1979

Richard Baller  
Trevor Bayley  
Graham Fisher  
James Martin  
Neale Perrins  
Guy Perry  
Brian Shindler

## 1980

David Brown  
Tim Ceney  
Julian Coulter  
Matthew Duggan  
Christopher Glover  
Nick Insley  
Adam Jenney  
Chris Jillings  
Steve King  
Peter Kinsman  
David Slaney  
Roger Wood

## 1981

Peter Chadwick  
Dan Clarke  
Robert Glen  
Steve Hippiusley-Cox  
Mark Hudson  
Robert Lawrance  
Simon Martin  
Andrew Maund  
Simon Medcalf  
Brendan Mulligan  
Alastair Poole  
Richard Taylor

## 1982

Peter Fraser  
Richard Gedge  
Hamish Nuttall  
Karl Przywala  
David Tyler

## 1983

Keith Buckingham  
Malcolm Crawford  
Simon Dowell  
Karl Przywala  
Kevin Handley  
John Hawthorne  
Michael Hughes  
James Lavery  
Andrew Marshall  
James Mather  
Richard Robbins  
Adam Rodaway  
Ian Williams

## 1984

Mark England  
James Grenfell  
Gerald Lowe  
Richard Mason  
Stephen Taylor  
Richard Tyler

## 1985

Peter Branson  
Giles Dickson  
Brian Ducille  
James Dunstan  
Mark Hughes  
Chris Jones  
Simon Linford  
Brian McCauley  
Jeremy Sharratt  
Dave Ward  
Rupert Ward

## 1986

Lee Bacchus  
Graham Baker  
K S Chambers  
Chris Evans  
Micheal Eyles  
Damian Grosvenor  
Jasper Kent  
Anthony King  
Iain McNeish  
Gary Meads  
Martin Palmer  
William Pike  
Bruce Wedgwood-Oppenheim



**1987**

Peter Ashton  
Jolyon Constable  
Jonathan Crabtree  
Edward de Salis  
Young  
Paul Ellis  
Anthony Hall  
Philip Henrick  
Ian Wright

**1988**

Daniel Batchelor  
Desmond Burley  
Andrew Cook  
Carl Csukas  
Guy Evans  
Robert Farwell  
Paul Gould  
Andrew Hitchins  
Paul Hodgetts  
Stuart Lane  
Jason Mann  
Richard McIlwraith  
Adrian Salmon  
Neil Shah  
Ashok Takhar  
Paul Whatley

**1989**

Dan Aston  
Alexander Borlenghi  
Tim Collinson  
James Donovan  
Justin Goddard  
Andrew Harrop  
Paul Hockley  
Carlton Hood  
Paddy Howarth  
James Patterson  
Roderick Tait  
Andy Thomson  
Tom Woolgrove

**1990**

Andrew Brown  
Paul Challinor  
Jeremy Everest  
Mark Henderson  
Harris Irfan  
Simon Johnson  
Adam Kendall  
Tim Langley  
Bernard Leckie  
Thomas Pritchard  
Faisal Saigol  
Darren Sharma  
Andrew Slusarczuk  
Simon Thomas  
Richard Warwick

**1991**

Lee Bartlett  
Francis Boyer  
Mark Cooke  
Andrew Crocker  
Ashley Goodall  
Randeep Kulshrestha  
Oliver Lee  
Dave McMullan  
Deepak Nambisan  
Steve Parker  
James Priory  
Steven Taylor  
Peter Taylor  
Christopher Ward  
Simon Weller  
James Williamson

**1992**

Celyn Armstrong  
Toby Arrowsmith  
Jonathan Bennett  
Deepak Bhadri  
Anil Budh-Raja  
Paul Ecclestone-  
Brown  
Gwyn Evans  
David Gwynne  
Mark Hirst  
Robert Jarvis  
Amerjit Kalirai  
Gavin Kerr  
William Parry  
Rajan Paw  
Alastair Taylor  
Gavin Twigg  
Mohammed Waheed

**1993**

Graeme Anderson  
Joseph Cheshire  
Stuart Estell  
Mark Harrison  
Alexander Lowe  
James Mason  
Andrew Parsons  
Edward Pugh  
Richard Stockton

**1994**

Richard Brookes  
Simon Cliff  
Jeremy Davies  
Christopher Hamer  
Robert Howard  
Rajeev Paranandi  
Matthew Price  
Timothy Robinson  
Edward Slater  
James Webb

**1995**

Timothy Brook  
William Cadbury  
Satyen Dhana  
Jason Edwards  
Edwin Grice  
Alexander Kakoullis  
Sasi-Kanth Mallela  
James Marchant  
Paul Meredith  
Paul Miller  
Amit Nayyar  
Som Sarkar  
Iain Sawers  
Julian Soles  
Gareth Weetman

**1996**

Aftab Akram  
Andrew Baker  
Demian Flowers  
Chris Jones  
Diarmid Mackenzie  
Alex Makepeace  
John McDermott  
Alex McTavish  
Neil Robertson  
Simon Rosenberg  
Kris Shergold

**1997**

Vikas Bhalla  
Nick Bradley  
Aidan Burley  
Mustafa Jaffar  
Sam Jones  
Hassan Kapadia  
Asif Khattak  
Tom Manners  
Richard McGuire  
Michael Pandazis  
James Parker  
Jonathan Ross  
Vikram Sandhu  
Michael Sheldon  
Stephen Stretton  
Alastair Treharne  
Mark Whitehouse

**1998**

Ben Bushell  
William Critchlow  
Bernard Dodd  
Sandeep Geeranavar  
Andrew MacLachlan  
Philip Richardson  
Ben Sharp  
Athos Tziambazis

**1999**

Daniel Burns  
Robert Cumberland  
David Eckley  
Peter Eckley  
Stuart James  
Edward Johnson  
Kiran Kamtekar  
Milan Mehta  
Ravi Misra  
Prashant Pattni  
Andrew Peat  
Henry Pertinez  
Jonathan Pollock  
Matthew Rees  
Ben Salter  
Matthew Wheeldon  
Andrew Wood

**2000**

Raihan Akhtar  
David Ault  
Matthew Benjamin  
Russell Benson  
Lee Bushell  
David Chavda  
Mark Davis  
Ali Hussain  
Richard Kay  
Ian Miller  
Matthew Reeve  
Qasim Shah  
Chris Sheriff  
Joe Tipper  
Amarik Ubhi

**2001**

Zaheer Bhanji  
James Grigg  
Alex Lee  
Peter Mitchell  
Greg Nixon  
Viet Pham  
Tom Prew  
Oliver Watkins

**2002**

Pavittar Bansel  
Mark Colman  
Richard Folsom  
Abbas Kanani  
Imran Karjekar  
Tetsuro Nagata  
Ben Reaney  
Thomas Reynard  
Neil Shastri-Hurst  
James Silber

**2003**

Ceri Haddon  
Simon Harding

**2004**

David Hingley  
Hasnain Khimji  
James Neale  
Joe Speight

**2005**

Magdi Adab  
John Ashton  
Sebastian Atay  
Nicholas Jackson  
Jack Johnson

**2007**

Joseph Russell

**2010**

Samuel Peat

**Parents, staff and friends**

Mr and Mrs M Afzal  
Mr and Mrs S Bailey  
Mr G Berger  
Mr and Mrs J Burns  
Jane Davies  
Neil Finnegan  
Lynn Fulford  
Mr M Galyas  
Mr and Mrs Gill  
Mr and Mrs P Glossop  
Mr and Mrs B Han  
Mr and Mrs M R Hassam  
Lucy Henry  
John Hewitt  
Mr and Mrs C Horton  
Mr and Mrs M Hundle  
Mr and Mrs A Jackson  
Mr and Mrs U Kale  
Dr and Dr M S Kalkat  
Dr and Mrs B Kumaratne  
James Kuo  
Simon Lerwill  
Gita Majumdar  
Mr and Mrs A McGuirk  
Mrs E McKenzie-Ward  
Mr and Mrs K S Mehboob Ali  
Hamid Mughal  
Dr and Mrs S P Mulay  
Mr and Mrs I Neale  
Lynn O'Connor  
Shirin Panthaki  
Mr and Mrs D Pett  
Mr and Mrs K Phillips  
Dr and Mrs H Rai  
Keren Riley  
Mr and Mrs M Robertson  
Mr and Mrs Saini  
Randeep Sharma  
Mrs M L Shiu  
Mr and Mrs D Simkiss  
Roger Skinner  
Mr and Mrs S Stacey  
Dr and Mrs D Stewart  
Mr and Mrs S Suthi  
Julia Tagg  
Mr and Mrs M Virdee  
Mr and Mrs R Wheeler  
West Midlands Youth Ballet Fund  
Old Edwardian's Cricket Club



THE COAT OF ARMS OF KING EDWARD VI

# THE KING EDWARD'S SCHOOL BIRMINGHAM TRUST

The King Edward's School Birmingham Trust, Development & OEA Office,  
King Edward's School, Edgbaston Park Road, Birmingham B15 2UA

Tel: 0121 415 6055 Email: [development@kes.org.uk](mailto:development@kes.org.uk)

[www.trust.kes.org.uk](http://www.trust.kes.org.uk)